


---

---

---

---

---

---

---

---

**E<sup>3</sup>**

- EXPANSION
- EXCHANGE
- EMERGENCE

---

---

---

---

---

---

---

---




---

---

---

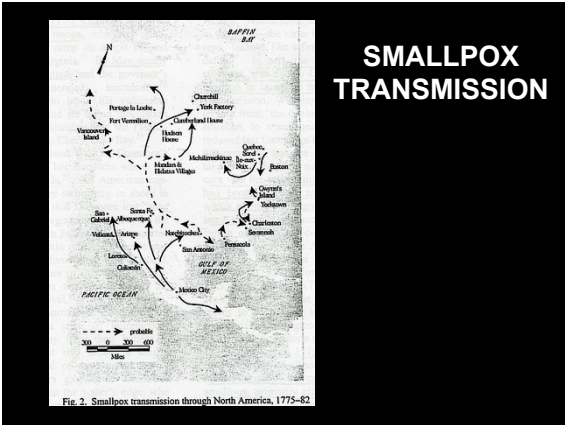
---

---

---

---

---




---

---

---

---

---

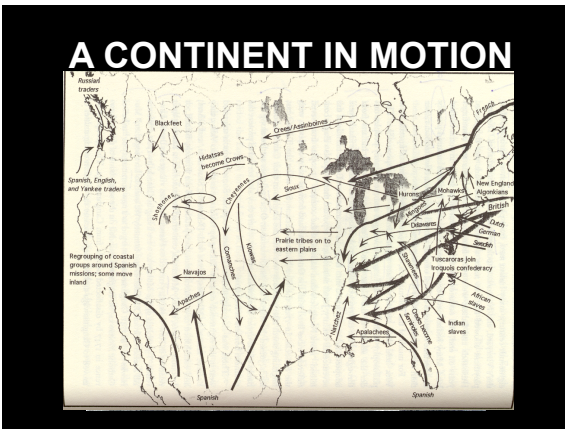
---

---

---

---

---




---

---

---

---

---

---

---

---

---

---

### MARKING THE LAND

**Algonquian Communal System**

**Metis Long Lot System**

**Southern Metes and Bounds**

**New England Rectangular System**

**Spanish Land Grant System**

---

---

---

---

---

---

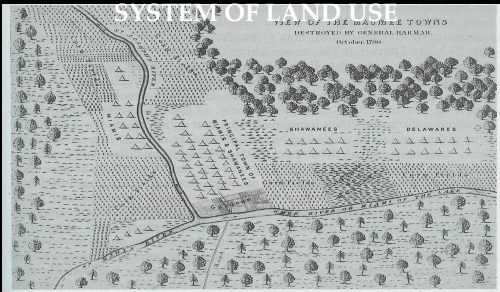
---

---

---

---

## ALGOLQUIN FUNCTIONAL AND COMMUNAL



This map of the towns on the Maumee shows the extensive cornfields surrounding the villages. (Journal of Major E. Denny)

---

---

---

---

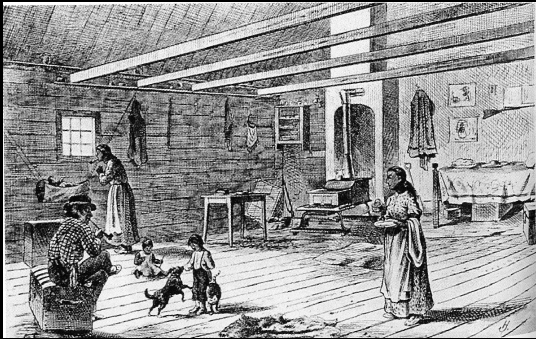
---

---

---

---

## METIS LONG-LOT SYSTEM




---

---

---

---

---

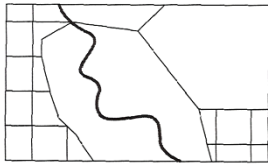
---

---

---

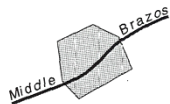
## SPANISH LAND GRANT SYSTEM

**Spanish Grant**  
Uses a physical measure of distance to enclose a property



1 Mile

*"All the land that can be surrounded by five hides\* in the third valley of the Middle Brazos."*



\*The Spanish cut a cowhide into thin strips to use as string. This became a convenient tool to measure distance.

---

---

---

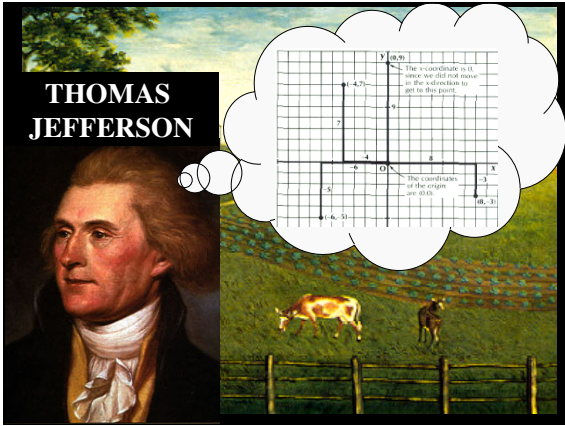
---

---

---

---

---




---



---



---



---



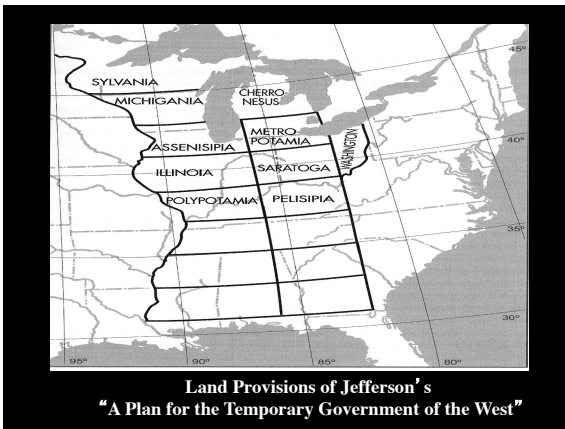
---



---



---




---



---



---



---



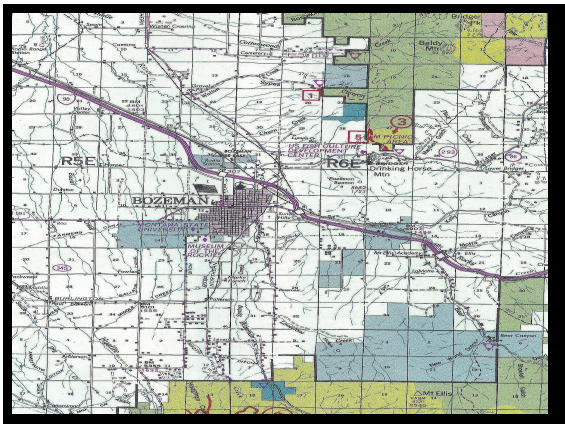
---



---



---




---



---



---



---



---



---



---